

FACT BOOK

For the year ended March 31, 2009

Contents :

| | |
|--|-----------|
| Financial Highlights (1) | 1 |
| Consolidated Business Results | |
| Financial Highlights (2) | 2 |
| Consolidated Balance Sheets | |
| Financial Highlights (3) | 3 |
| Consolidated Statements of Cash Flows | |
| Capital Expenditure, Depreciation, R&D Expenses (Consolidated) | |
| Number of Employees and Related Companies | |
| Consolidated Net Sales | 4 |
| Sales by Area | |
| Sales by Product Category | |
| Business Segment (Consolidated) | 5 |
| Net Sales and Operating Revenue | |
| Operating Income | |
| Consolidated Statements of Income | 6 |
| Consolidated Balance Sheets (1) | 7 |
| Assets | |
| Consolidated Balance Sheets (2) | 8 |
| Liabilities, Stockholders' Equity | |
| Consolidated Statements of Cash Flows | 9 |
| Stock Information | 10 |

(Notes) 1. Financial figures in this report have been calculated on a consolidated basis.

Fiscal year is a period of twelve months from April 1 to March 31.

2. SANYO's consolidated financial statements are prepared based on the U.S. accounting standards.

3. The financial figures in this report include some figures which are not audited.

SANYO Electric Co., Ltd.

Financial Highlights (1)

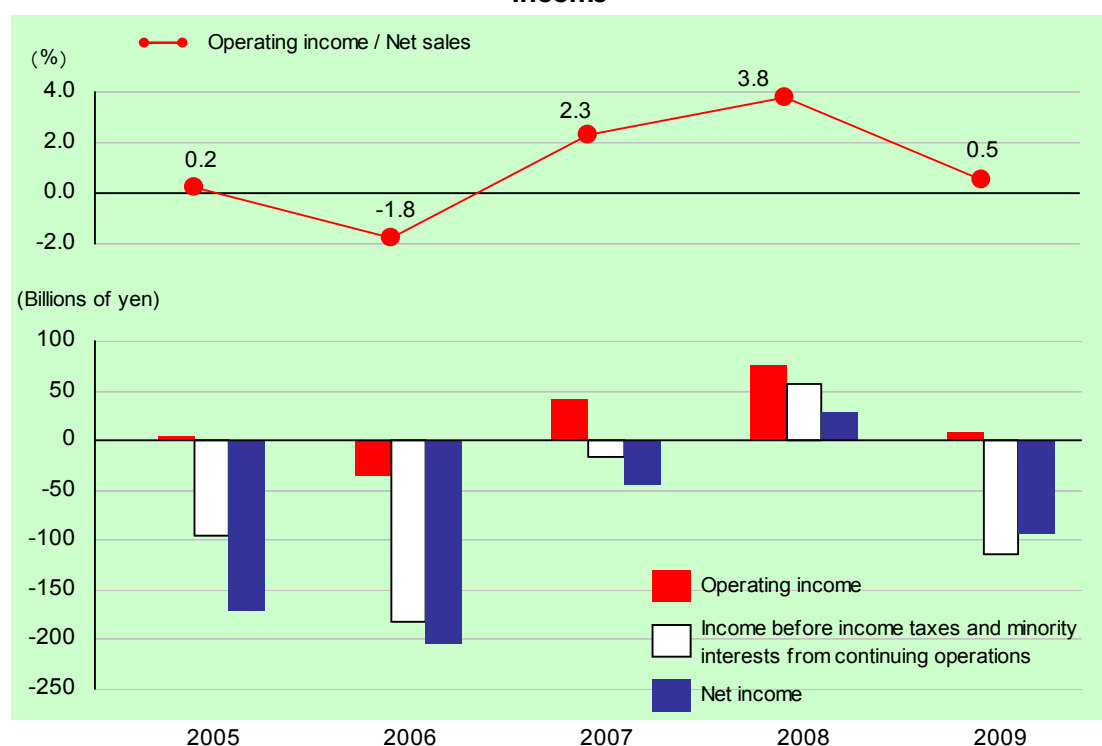
<Consolidated Business Results>

Years ended March 31

(Millions of yen)

| | 2005 | 2006 | 2007 | 2008 | 2009 |
|---|-----------|-----------|-----------|-----------|-----------|
| Net sales | 2,089,791 | 2,031,652 | 1,882,612 | 2,017,824 | 1,770,656 |
| Operating income (loss) | 4,850 | (35,905) | 42,605 | 76,141 | 8,276 |
| Ratio to net sales (%) | 0.2 | (1.8) | 2.3 | 3.8 | 0.5 |
| Income (loss) before income taxes and minority interests from continuing operations | (96,140) | (182,032) | (16,084) | 57,228 | (113,748) |
| Ratio to net sales (%) | (4.6) | (9.0) | (0.9) | 2.8 | (6.4) |
| Net income (loss) from continuing operations | (179,260) | (207,375) | (45,029) | 39,148 | (122,158) |
| Ratio to net sales (%) | (8.6) | (10.2) | (2.4) | 1.9 | (6.9) |
| Net income (loss) from discontinued operations | 7,716 | 1,714 | (333) | (10,448) | 28,932 |
| Ratio to net sales (%) | 0.4 | 0.1 | (0.0) | (0.5) | 1.6 |
| Net income (loss) | (171,544) | (205,661) | (45,362) | 28,700 | (93,226) |
| Ratio to net sales (%) | (8.2) | (10.1) | (2.4) | 1.4 | (5.3) |
| Return on equity ratio (%) | (43.7) | (59.5) | (12.7) | 9.3 | (41.0) |
| Return on total assets ratio (%) | (6.5) | (8.6) | (2.2) | 1.6 | (6.2) |

— Income —



- (Notes) 1. To be consistent with financial reporting principles and practices generally accepted in Japan, operating income is calculated as net sales and operating revenue less cost of sales and selling, general and administrative expenses.
2. Based on the U.S. accounting standards, SANYO classified SANYO Electric Credit Co., Ltd. as a discontinued operation in the fiscal year ended March, 2006 and has reflected those changes in the consolidated financial statements for the fiscal year ended March, 2005.
3. Based on the U.S. accounting standards, SANYO classified the mobile phone business as a discontinued operation in the fiscal year ended March, 2008 and has reflected those changes in the consolidated financial statements for the fiscal years ended March, 2007 and before.
4. Return on equity ratio = Net income / Average stockholders' equity at the beginning and the end of each fiscal year
5. Return on total assets ratio = Net income / Average total assets at the beginning and the end of each fiscal year

Financial Highlights (2)

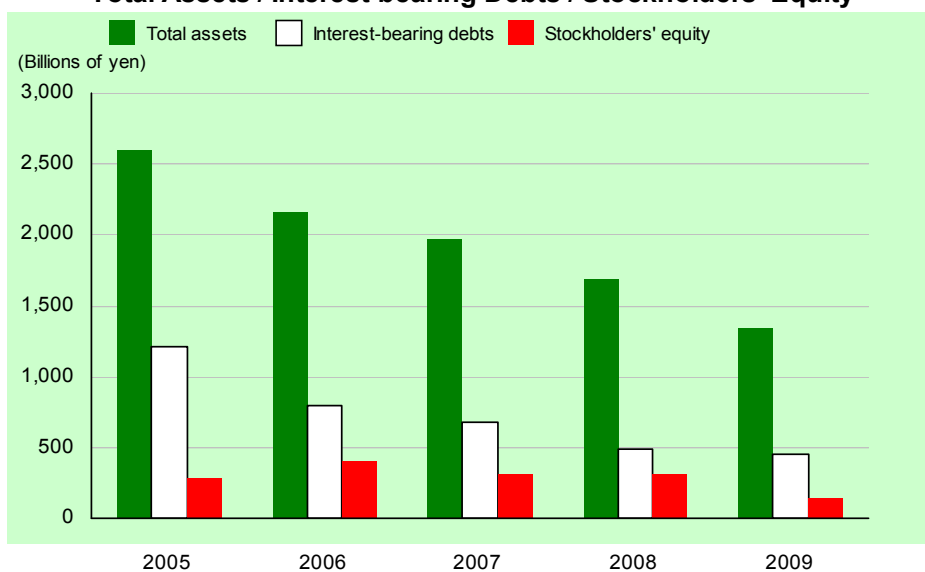
<Consolidated Balance Sheets>

As of March 31

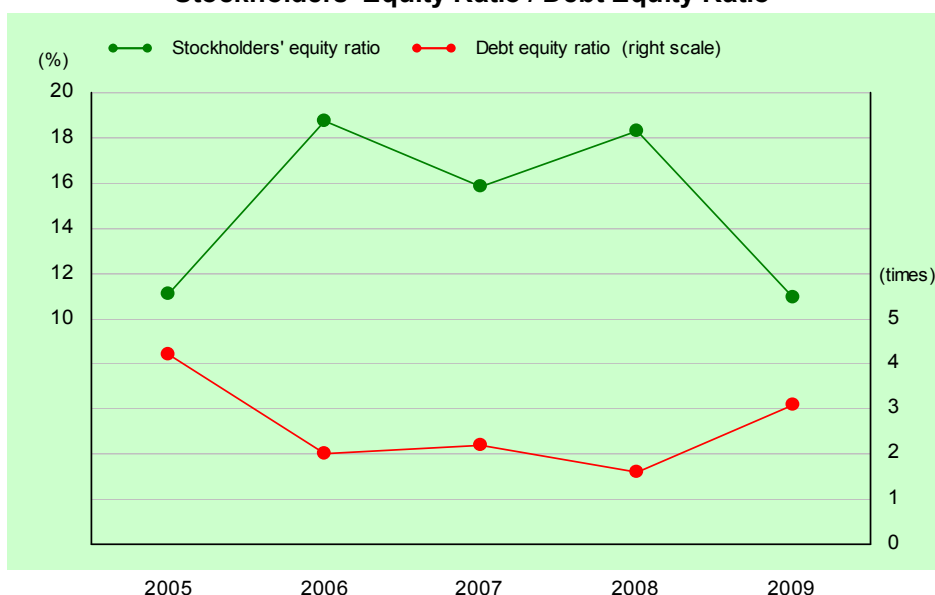
(Millions of yen)

| | 2005 | 2006 | 2007 | 2008 | 2009 |
|--------------------------------|-----------|-----------|-----------|-----------|-----------|
| Total assets | 2,600,677 | 2,154,837 | 1,970,940 | 1,683,837 | 1,345,403 |
| Stockholders' equity | 288,268 | 402,892 | 312,008 | 308,043 | 146,454 |
| Stockholders' equity ratio (%) | 11.1 | 18.7 | 15.8 | 18.3 | 10.9 |
| Inventories | 383,976 | 317,894 | 329,108 | 286,165 | 254,474 |
| Interest-bearing debts | 1,213,879 | 792,166 | 678,878 | 488,886 | 447,939 |
| Net interest-bearing debts | 918,897 | 494,666 | 344,192 | 208,180 | 228,546 |
| Debt equity ratio (times) | 4.2 | 2.0 | 2.2 | 1.6 | 3.1 |

— Total Assets / Interest-bearing Debts / Stockholders' Equity —



— Stockholders' Equity Ratio / Debt Equity Ratio —



- (Notes)
1. Net interest-bearing debts = Interest-bearing debts – Cash and cash equivalents
 2. Stockholders' equity ratio = Stockholders' equity / Total assets
 3. Debt equity ratio = Interest-bearing debts / Stockholders' equity

Financial Highlights (3)

<Consolidated Cash Flows>

Years ended March 31

(Millions of yen)

| | 2005 | 2006 | 2007 | 2008 | 2009 |
|--|----------|----------|----------|-----------|----------|
| Cash flows from operating activities | 3,695 | (664) | (7,524) | 106,835 | 10,233 |
| Cash flows from investing activities | (82,234) | 36,001 | (16,866) | (36,265) | (22,570) |
| Free cash flows | (78,539) | 35,337 | (24,390) | 70,570 | (12,337) |
| Cash flows from financing activities | 70,580 | (69,980) | 62,002 | (102,306) | (38,118) |
| Cash and cash equivalents at end of year | 294,982 | 297,500 | 334,686 | 280,706 | 219,393 |

(Note) SANYO defines free cash flows as the sum of cash flows from operating activities and cash flows from investing activities.

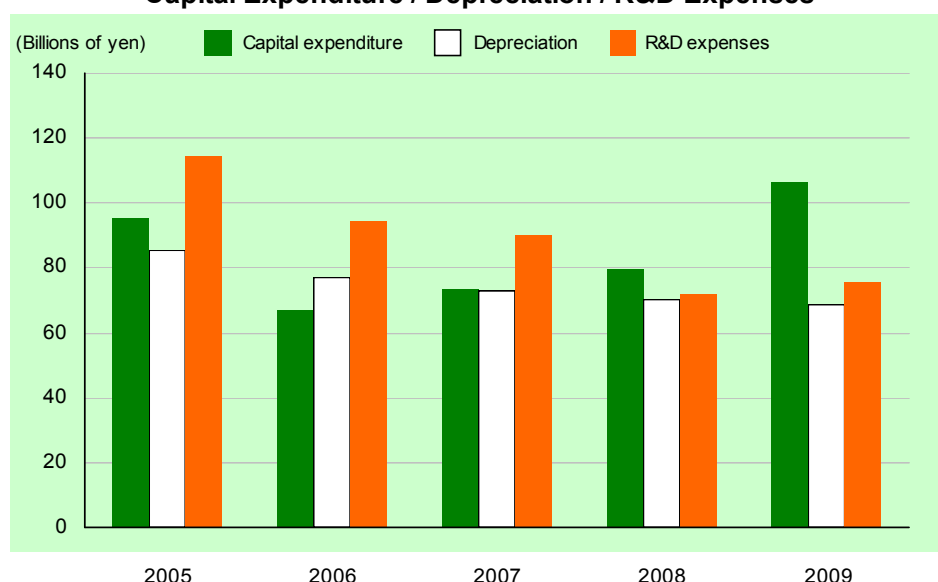
<Capital Expenditure, Depreciation, R&D Expenses (Consolidated)>

Years ended March 31

(Millions of yen)

| | 2005 | 2006 | 2007 | 2008 | 2009 |
|---|---------|--------|--------|--------|---------|
| Capital expenditure (excluding intangibles) | 95,233 | 67,103 | 73,316 | 79,527 | 106,533 |
| Depreciation (excluding intangibles) | 85,657 | 76,881 | 72,716 | 70,293 | 68,685 |
| R&D expenses | 114,157 | 94,267 | 90,094 | 71,797 | 75,434 |

— Capital Expenditure / Depreciation / R&D Expenses —



(Notes) 1. Based on the U.S. accounting standards, SANYO classified SANYO Electric Credit Co., Ltd. as a discontinued operation in the fiscal year ended March, 2006 and has reflected those changes in the consolidated financial statements for the fiscal year ended March, 2005.

2. Based on the U.S. accounting standards, SANYO classified the mobile phone business as a discontinued operation in the fiscal year ended March, 2008 and has reflected those changes in the consolidated financial statements for the fiscal years ended March, 2007 and before.

<Number of Employees and Related Companies>

As of March 31

| | 2005 | 2006 | 2007 | 2008 | 2009 |
|-------------------------------------|--------|---------|--------|--------|--------|
| Number of employees (consolidated) | 96,023 | 106,389 | 94,906 | 99,875 | 86,016 |
| Number of consolidated subsidiaries | 142 | 236 | 205 | 185 | 176 |
| Number of equity method affiliates | 55 | 73 | 70 | 60 | 54 |

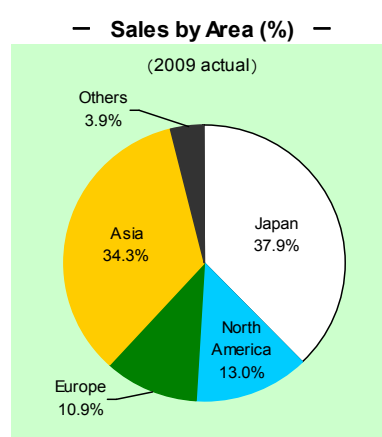
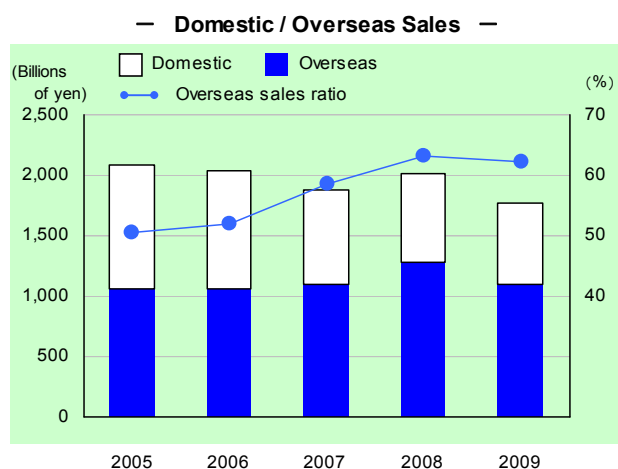
Consolidated Net Sales

<Sales by Area>

Years ended March 31

(Millions of yen)

| | 2005 | 2006 | 2007 | 2008 | 2009 |
|------------------------|-----------|-----------|-----------|-----------|-----------|
| Domestic | 1,034,825 | 975,597 | 782,012 | 742,528 | 670,777 |
| Share of net sales (%) | 49.5 | 48.0 | 41.5 | 36.8 | 37.9 |
| Overseas | 1,054,966 | 1,056,055 | 1,100,600 | 1,275,296 | 1,099,879 |
| Share of net sales (%) | 50.5 | 52.0 | 58.5 | 63.2 | 62.1 |
| North America | 208,618 | 207,378 | 221,425 | 258,860 | 229,839 |
| Europe | 178,991 | 183,018 | 182,014 | 239,156 | 192,473 |
| Asia | 591,877 | 603,714 | 641,455 | 713,325 | 608,469 |
| Others | 75,480 | 61,945 | 55,706 | 63,955 | 69,098 |
| Net sales | 2,089,791 | 2,031,652 | 1,882,612 | 2,017,824 | 1,770,656 |

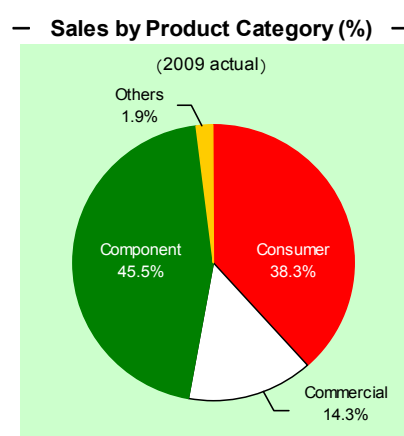
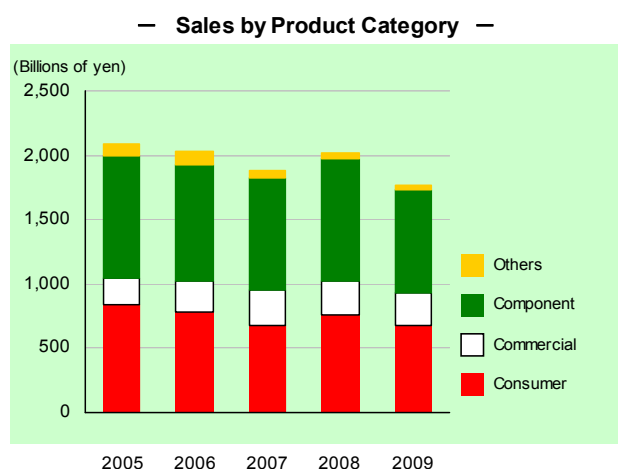


<Sales by Product Category>

Years ended March 31

(Millions of yen)

| | 2005 | 2006 | 2007 | 2008 | 2009 |
|------------|-----------|-----------|-----------|-----------|-----------|
| Consumer | 833,321 | 781,391 | 676,876 | 756,690 | 678,708 |
| Commercial | 212,842 | 234,962 | 270,553 | 262,507 | 253,432 |
| Component | 946,433 | 911,750 | 875,114 | 953,290 | 804,930 |
| Others | 97,195 | 103,549 | 60,069 | 45,337 | 33,586 |
| Total | 2,089,791 | 2,031,652 | 1,882,612 | 2,017,824 | 1,770,656 |



(Note) Based on the U.S. accounting standards, SANYO classified the mobile phone business as a discontinued operation in the fiscal year ended March, 2008 and has reflected those changes in the consolidated financial statements for the fiscal years ended March, 2007 and before.

Business Segment (Consolidated)

<Net Sales and Operating Revenue>

Years ended March 31

| | | Before reclassification (Note 3) | | | | | (Millions of yen) |
|----------------------------|--|----------------------------------|-----------|-----------|-----------|-----------|-------------------|
| | | 2005 | 2006 | 2007 | 2008 | 2009 | |
| Consumer | AV/Information and Communication Equipment | 987,645 | 894,510 | 430,415 | 533,921 | 473,853 | |
| | Home Appliances | 260,667 | 259,885 | 254,180 | 227,255 | 211,058 | |
| | Total | 1,248,312 | 1,154,395 | 684,595 | 761,176 | 684,911 | |
| Commercial | | 216,121 | 236,272 | 275,358 | 264,141 | 255,558 | |
| Component | Electronic Devices | 442,436 | 378,270 | 339,685 | 322,959 | 239,664 | |
| | Batteries | 369,050 | 419,225 | 414,404 | 488,434 | 470,357 | |
| | Others | 172,901 | 150,953 | 146,584 | 155,944 | 104,719 | |
| | Total | 984,387 | 948,448 | 900,673 | 967,337 | 814,740 | |
| Others | | 183,651 | 198,937 | 128,690 | 113,221 | 103,842 | |
| Corporate and Eliminations | | (71,086) | (53,747) | (39,409) | (22,490) | (17,884) | |
| Total | | 2,561,385 | 2,484,305 | 1,949,907 | 2,083,385 | 1,841,167 | |

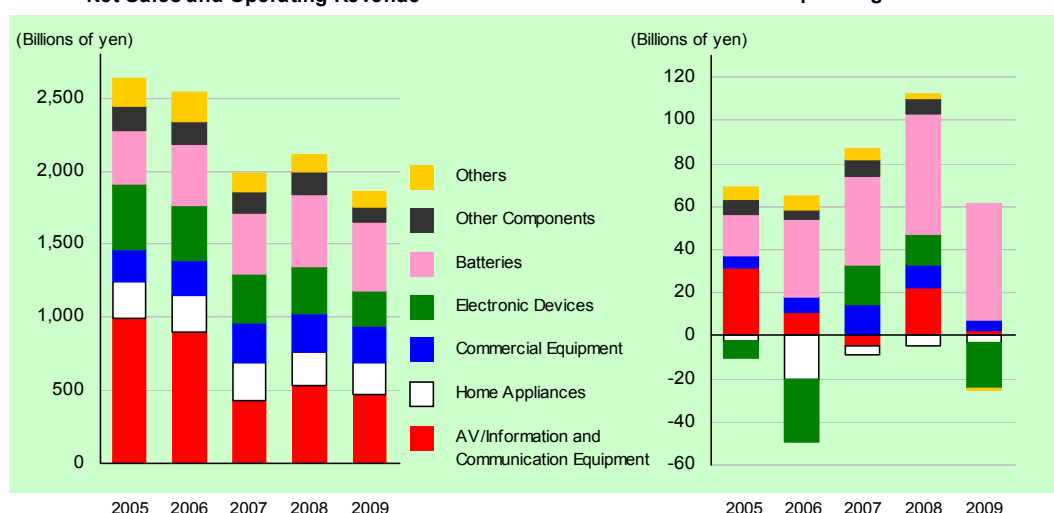
<Operating Income>

Years ended March 31

| | | Before reclassification (Note 3) | | | | | (Millions of yen) |
|----------------------------|--|----------------------------------|----------|----------|----------|----------|-------------------|
| | | 2005 | 2006 | 2007 | 2008 | 2009 | |
| Consumer | AV/Information and Communication Equipment | 31,257 | 10,594 | (4,793) | 22,472 | 2,079 | |
| | Home Appliances | (2,382) | (20,483) | (3,843) | (4,731) | (3,600) | |
| | Total | 28,875 | (9,889) | (8,636) | 17,741 | (1,521) | |
| Commercial | | 6,176 | 7,471 | 14,481 | 10,442 | 5,365 | |
| Component | Electronic Devices | (7,876) | (28,554) | 18,332 | 14,211 | (21,188) | |
| | Batteries | 19,026 | 35,759 | 41,320 | 55,797 | 53,970 | |
| | Others | 7,046 | 4,427 | 7,955 | 7,294 | 38 | |
| | Total | 18,196 | 11,632 | 67,607 | 77,302 | 32,820 | |
| Others | | 5,442 | 6,655 | 4,515 | 1,874 | (216) | |
| Corporate and Eliminations | | (23,453) | (33,023) | (35,362) | (31,218) | (28,172) | |
| Total | | 35,236 | (17,154) | 42,605 | 76,141 | 8,276 | |

— Net Sales and Operating Revenue —

— Operating Income —



(Notes) 1. To be consistent with financial reporting principles and practices generally accepted in Japan, operating income is calculated as net sales and operating revenue less cost of sales and selling, general and administrative expenses.

2. Based on the U.S. accounting standards, SANYO classified SANYO Electric Credit Co., Ltd. as a discontinued operation in the fiscal year ended March, 2006 and has reflected those changes in the consolidated financial statements for the fiscal year ended March, 2005.

3. Based on the U.S. accounting standards, SANYO classified the mobile phone business as a discontinued operation in the fiscal year ended March, 2008 and has reflected those changes in the consolidated financial statements for the fiscal year ended March, 2007, however, not reflected those for the fiscal years ended March, 2006 and before.

4. Charts do not include figures of "corporate and eliminations."

Consolidated Statements of Income

| Years ended March 31 | Before reclassification (Note 3) | | | (Millions of yen) | |
|--|----------------------------------|------------------|------------------|-------------------|------------------|
| | 2005 | 2006 | 2007 | 2008 | 2009 |
| Net sales | 2,484,639 | 2,397,026 | 1,882,612 | 2,017,824 | 1,770,656 |
| Other operating revenue | 76,746 | 87,279 | 67,295 | 65,561 | 70,511 |
| Sales and operating revenue | 2,561,385 | 2,484,305 | 1,949,907 | 2,083,385 | 1,841,167 |
| Cost of sales | 2,125,637 | 2,102,734 | 1,589,921 | 1,698,572 | 1,520,583 |
| Selling, general and administrative expenses | 400,512 | 398,725 | 317,381 | 308,672 | 312,308 |
| Operating income (loss) | 35,236 | (17,154) | 42,605 | 76,141 | 8,276 |
| Other income: | 31,119 | 66,840 | 39,545 | 46,253 | 22,734 |
| Interest and dividends | 5,066 | 7,170 | 7,482 | 8,718 | 4,343 |
| Other income | 26,053 | 59,670 | 32,063 | 37,535 | 18,391 |
| Other expenses: | 135,122 | 215,382 | 98,234 | 65,166 | 144,758 |
| Interest | 13,127 | 18,412 | 20,353 | 16,383 | 12,107 |
| Other expenses | 121,995 | 196,970 | 77,881 | 48,783 | 132,651 |
| Income (loss) before income taxes and minority interests from continuing operations | (68,767) | (165,696) | (16,084) | 57,228 | (113,748) |
| Income taxes | 104,695 | 38,309 | 25,169 | 15,458 | 5,418 |
| Income (loss) before minority interests from continuing operations | (173,462) | (204,005) | (41,253) | 41,770 | (119,166) |
| Minority interests | (556) | (3,675) | 3,776 | 2,622 | 2,992 |
| Net income (loss) from continuing operations | (172,906) | (200,330) | (45,029) | 39,148 | (122,158) |
| Discontinued operations | | | | | |
| Income (loss) before income taxes from discontinued operations | 3,372 | (1,882) | 3,014 | (9,919) | 32,535 |
| Provision for Income taxes | 2,010 | 3,449 | 3,347 | 529 | 3,603 |
| Net income (loss) from discontinued operations | 1,362 | (5,331) | (333) | (10,448) | 28,932 |
| Net income (loss) | (171,544) | (205,661) | (45,362) | 28,700 | (93,226) |

(Notes) 1. To be consistent with financial reporting principles and practices generally accepted in Japan, operating income is calculated as net sales and operating revenue less cost of sales and selling, general and administrative expenses.

2. Based on the U.S. accounting standards, SANYO classified SANYO Electric Credit Co., Ltd. as a discontinued operation in the fiscal year ended March, 2006 and has reflected those changes in the consolidated financial statements for the fiscal years ended March, 2005.

3. Based on the U.S. accounting standards, SANYO classified the mobile phone business as a discontinued operation in the fiscal year ended March, 2008 and has reflected those changes in the consolidated financial statements for the fiscal year ended March, 2007, however, not reflected those for the fiscal years ended March, 2006 and before.

| Summary of reclassifications | (Millions of yen) | | | | |
|---|-------------------|------------------|-----------------|---------------|-----------------|
| | 2005 | 2006 | 2007 | 2008 | 2009 |
| Net sales | 2,089,791 | 2,031,652 | 1,882,612 | 2,017,824 | 1,770,656 |
| Operating income (loss) | 4,850 | (35,905) | 42,605 | 76,141 | 8,276 |
| Income (loss) before income taxes and minority interests from continuing operations | (96,140) | (182,032) | (16,084) | 57,228 | (113,748) |
| Net income (loss) from continuing operations | (179,260) | (207,375) | (45,029) | 39,148 | (122,158) |
| Net income (loss) from discontinued operations | 7,716 | 1,714 | (333) | (10,448) | 28,932 |
| Net income (loss) | (171,544) | (205,661) | (45,362) | 28,700 | (93,226) |

Consolidated Balance Sheets (1)

| As of March 31 | (Millions of yen) | | | | |
|--|-------------------|------------------|------------------|------------------|------------------|
| | 2005 | 2006 | 2007 | 2008 | 2009 |
| (Assets) | | | | | |
| Current assets: | | | | | |
| Cash | 124,053 | 196,784 | 148,382 | 204,237 | 155,205 |
| Time deposits | 170,929 | 100,716 | 186,304 | 76,469 | 64,188 |
| Restricted cash | - | 264,800 | 88,000 | - | - |
| Securities | 9,542 | 1,109 | 672 | 2,188 | 9 |
| Notes and accounts receivables: | | | | | |
| Trade | 448,281 | 461,613 | 453,999 | 374,576 | 284,806 |
| Finance receivables | 261,639 | - | - | - | - |
| Affiliates | 29,406 | 19,182 | 21,117 | 33,756 | 25,247 |
| Allowance for doubtful accounts | (30,046) | (10,509) | (7,493) | (7,954) | (7,508) |
| Inventories | 383,976 | 317,894 | 329,108 | 286,165 | 254,474 |
| Deferred income taxes | 17,911 | 8,287 | 5,850 | 6,687 | 6,220 |
| Assets held for sale | - | - | - | 56,908 | - |
| Prepaid expenses and other | 77,675 | 60,441 | 62,271 | 60,887 | 47,104 |
| Total current assets | 1,493,366 | 1,420,317 | 1,288,210 | 1,093,919 | 829,745 |
| Investments and advances: | | | | | |
| Affiliates | 56,066 | 48,000 | 49,180 | 46,877 | 40,180 |
| Securities and other investments | 194,925 | 112,988 | 84,045 | 30,736 | 25,339 |
| Total investments and advances | 250,991 | 160,988 | 133,225 | 77,613 | 65,519 |
| Property, plant and equipment: | | | | | |
| Buildings | 457,225 | 409,581 | 401,796 | 382,416 | 364,816 |
| Machinery and equipment | 944,543 | 919,154 | 867,425 | 778,019 | 729,161 |
| Accumulated depreciation | (941,762) | (941,303) | (901,604) | (819,036) | (814,344) |
| Land | 130,906 | 101,664 | 91,605 | 90,663 | 87,277 |
| Construction in progress | 20,319 | 11,590 | 9,557 | 11,554 | 26,703 |
| Net property, plant and equipment | 611,231 | 500,686 | 468,779 | 443,616 | 393,613 |
| Deferred income taxes | 32,512 | 10,935 | 13,921 | 10,686 | 11,032 |
| Other assets | 212,577 | 61,911 | 66,805 | 58,003 | 45,494 |
| Total assets | 2,600,677 | 2,154,837 | 1,970,940 | 1,683,837 | 1,345,403 |

Consolidated Balance Sheets (2)

| As of March 31 | (Millions of yen) | | | | |
|---|-------------------|------------------|------------------|------------------|------------------|
| | 2005 | 2006 | 2007 | 2008 | 2009 |
| (Liabilities) | | | | | |
| Current liabilities: | | | | | |
| Short-term borrowings | 408,531 | 264,441 | 219,785 | 166,570 | 57,195 |
| Current portion of long-term debt | 139,101 | 74,297 | 155,221 | 68,647 | 101,924 |
| Notes and accounts payable: | | | | | |
| Trade | 453,554 | 402,638 | 406,577 | 359,008 | 243,761 |
| Affiliates | 50,235 | 20,392 | 6,118 | 4,896 | 5,058 |
| Construction | 33,108 | 13,334 | 20,424 | 24,694 | 48,288 |
| Accrued income taxes | 11,301 | 11,638 | 8,997 | 7,016 | 5,723 |
| Deposits received from employees | 21,888 | 13,647 | 12,202 | 11,221 | 10,543 |
| Liabilities held for sale | - | - | - | 40,449 | - |
| Other liabilities | 248,810 | 245,856 | 245,564 | 180,828 | 159,488 |
| Total current liabilities | 1,366,528 | 1,046,243 | 1,074,888 | 863,329 | 631,980 |
| Long-term debt | 679,728 | 500,434 | 335,284 | 271,120 | 305,272 |
| Accrued pension and severance costs | 216,190 | 186,969 | 211,173 | 199,597 | 222,305 |
| Deferred income taxes | - | - | 8,327 | 8,961 | 6,824 |
| Others | - | - | 5,414 | 6,393 | 7,418 |
| Total liabilities | 2,262,446 | 1,733,646 | 1,635,086 | 1,349,400 | 1,173,799 |
| Minority interests in subsidiaries | 49,963 | 18,299 | 23,846 | 26,394 | 25,150 |
| (Stockholders' Equity) | | | | | |
| Common and preferred stock | 172,242 | 261,328 | 322,242 | 322,242 | 322,242 |
| Additional paid-in capital | 336,035 | 721,828 | 781,951 | 781,951 | 781,951 |
| Accumulated earnings (deficit) | (84,342) | (466,951) | (633,315) | (604,626) | (702,409) |
| Accumulated other comprehensive loss | (128,310) | (105,885) | (151,174) | (183,828) | (248,811) |
| Sub total | 295,625 | 410,320 | 319,704 | 315,739 | 152,973 |
| Less, treasury stock at cost | (7,357) | (7,428) | (7,696) | (7,696) | (6,519) |
| Total stockholders' equity | 288,268 | 402,892 | 312,008 | 308,043 | 146,454 |
| Total liabilities and stockholders' equity | 2,600,677 | 2,154,837 | 1,970,940 | 1,683,837 | 1,345,403 |

Consolidated Statements of Cash Flows

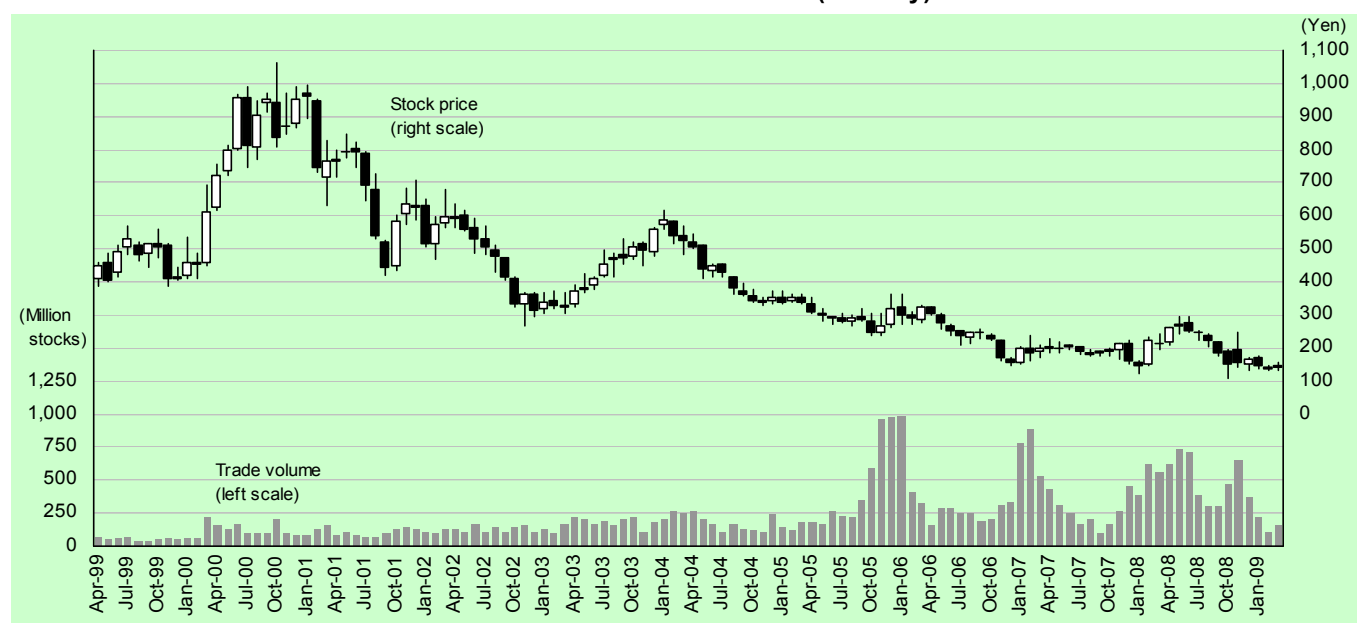
| Years ended March 31 | (Millions of yen) | | | | |
|---|-------------------|-----------------|-----------------|------------------|-----------------|
| | 2005 | 2006 | 2007 | 2008 | 2009 |
| 1. Cash flows from operating activities | | | | | |
| Net (loss) income | (171,544) | (205,661) | (45,362) | 28,700 | (93,226) |
| Adjustments to reconcile net (loss) income to net cash provided by operating activities | | | | | |
| Depreciation and amortization | 123,540 | 129,712 | 94,887 | 90,808 | 77,333 |
| Impairment loss on fixed assets | - | 107,702 | 9,882 | 8,171 | 57,775 |
| Decrease in notes and accounts receivable | 100,359 | 21,281 | 134 | 34,634 | 78,413 |
| Decrease (increase) in inventories | (24,872) | 78,552 | (19,219) | 15,988 | 16,396 |
| (Decrease) increase in notes and accounts payable | (67,385) | (105,520) | 3,402 | (8,640) | (100,546) |
| Other, net | 43,597 | (26,730) | (51,248) | (62,826) | (25,912) |
| Net cash provided by (used in) operating activities | 3,695 | (664) | (7,524) | 106,835 | 10,233 |
| 2. Cash flows from investing activities | | | | | |
| Proceeds from sale of marketable securities and investment securities, net of payments for purchase | (13,210) | 96,924 | 16,448 | 37,950 | 3,529 |
| Payments for purchase of property, plant and equipment | (96,633) | (84,564) | (66,607) | (79,259) | (80,689) |
| Proceeds from sale of property, plant and equipment | 39,711 | 46,760 | 34,661 | 9,071 | 8,057 |
| Proceeds on business transfer | 19,153 | - | - | - | - |
| Other, net | (31,255) | (23,119) | (1,368) | (4,027) | 46,533 |
| Net cash (used in) provided by investing activities | (82,234) | 36,001 | (16,866) | (36,265) | (22,570) |
| 3. Cash flows from financing activities | | | | | |
| Decrease in short-term borrowings | (20,737) | (20,432) | (39,155) | (44,250) | (100,087) |
| Increase (decrease) in long-term debt | 104,096 | (84,115) | (74,764) | (146,549) | 62,125 |
| Proceeds from issuance of new shares | - | 299,238 | - | - | - |
| Deposit in restricted cash | - | (300,000) | - | - | - |
| Withdrawal from restricted cash | - | 35,200 | 176,800 | 88,000 | - |
| Dividends paid | (12,632) | (1,606) | (730) | (749) | (1,213) |
| Other, net | (147) | 1,735 | (149) | 1,242 | 1,057 |
| Net cash (used in) provided by financing activities | 70,580 | (69,980) | 62,002 | (102,306) | (38,118) |
| 4. Effect of exchange rate changes on cash and cash equivalents | 1,145 | 8,182 | (426) | (11,739) | (10,858) |
| 5. Cash and cash equivalents included in assets held for sale | - | - | - | (10,505) | - |
| 6. Net (decrease) increase in cash and cash equivalents | (6,814) | (26,461) | 37,186 | (53,980) | (61,313) |
| 7. Cash and cash equivalents of newly consolidated subsidiaries | 24,334 | 28,979 | - | - | - |
| 8. Cash and cash equivalents at beginning of year | 277,462 | 294,982 | 297,500 | 334,686 | 280,706 |
| 9. Cash and cash equivalents at end of year | 294,982 | 297,500 | 334,686 | 280,706 | 219,393 |

Stock Information

Years ended March 31

| | | | 2005 | 2006 | 2007 | 2008 | 2009 |
|--|-------------------|-------|-----------|-----------|-----------|-----------|-----------|
| Price range of common stock | | | | | | | |
| | High | (Yen) | 545 | 363 | 324 | 241 | 297 |
| | Low | (Yen) | 330 | 237 | 148 | 120 | 110 |
| | Close | (Yen) | 334 | 323 | 201 | 210 | 146 |
| 1st quarter | High | (Yen) | 545 | 352 | 324 | 229 | 297 |
| | Low | (Yen) | 411 | 269 | 236 | 183 | 208 |
| 2nd quarter | High | (Yen) | 455 | 319 | 256 | 202 | 254 |
| | Low | (Yen) | 355 | 265 | 209 | 174 | 176 |
| 3rd quarter | High | (Yen) | 378 | 363 | 244 | 221 | 245 |
| | Low | (Yen) | 330 | 237 | 148 | 150 | 110 |
| 4th quarter | High | (Yen) | 370 | 362 | 237 | 241 | 175 |
| | Low | (Yen) | 331 | 270 | 151 | 120 | 132 |
| <hr/> | | | | | | | |
| Total common stocks issued | (Thousand shares) | | 1,872,338 | 1,872,338 | 1,872,338 | 1,872,338 | 1,872,338 |
| Treasury stocks | (Thousand shares) | | 17,608 | 17,874 | 18,836 | 19,230 | 16,527 |
| Weighted average number of common stocks | (Thousand shares) | | 1,854,947 | 1,854,591 | 1,853,675 | 1,853,310 | 1,855,386 |
| <hr/> | | | | | | | |
| Net income (loss) per share | (Yen) | | (92.5) | (195.0) | (72.7) | 4.7 | (15.2) |
| Stockholders' equity per share | (Yen) | | 155.4 | 16.8 | 2.0 | 1.3 | (25.0) |
| Cash dividends per share | (Yen) | | 3.0 | - | - | - | - |

— Stock Price and Trade Volume (Monthly) —



- (Notes) 1. Net income (loss) per share and Stockholders' equity per share are calculated in consideration of preferred stocks.
 2. The terms of the preferred stocks are as follows (as of March 31, 2009) :

| | Class A preferred stock | Class B preferred stock | Total |
|-------------------------------|--|----------------------------|-------------|
| Total preferred stocks issued | 182,542,200 | 246,029,300 | 428,571,500 |
| Voting rights | Class A stocks have voting rights, while Class B stocks have no voting rights. | | |
| Conversion conditions | Each preferred stock can be converted into 10 common stocks. | | |