

FACT BOOK

- For the year ended March 31, 2006 -

< Contents >

Financial Highlights (1)	1
Business results	
Financial Highlights (2)	2
Consolidated Balance Sheets	
Financial Highlights (3)	3
Consolidated Statements of Cash Flows	
Capital Expenditure, Depreciation, R&D Expenses	
The Numbers of Employees and Consolidated Subsidiaries	
Net Sales	4
Sales by Area	
Sales by Product Category	
Business Segment	5
Net Sales and Operating Revenue	
Operating Income	
Consolidated Statements of Income	6
Consolidated Balance Sheets (1)	7
Assets	
Consolidated Balance Sheets (2)	8
Liabilities, Stockholders' Equity	
Consolidated Statements of Cash Flows	9
Stock Information	10

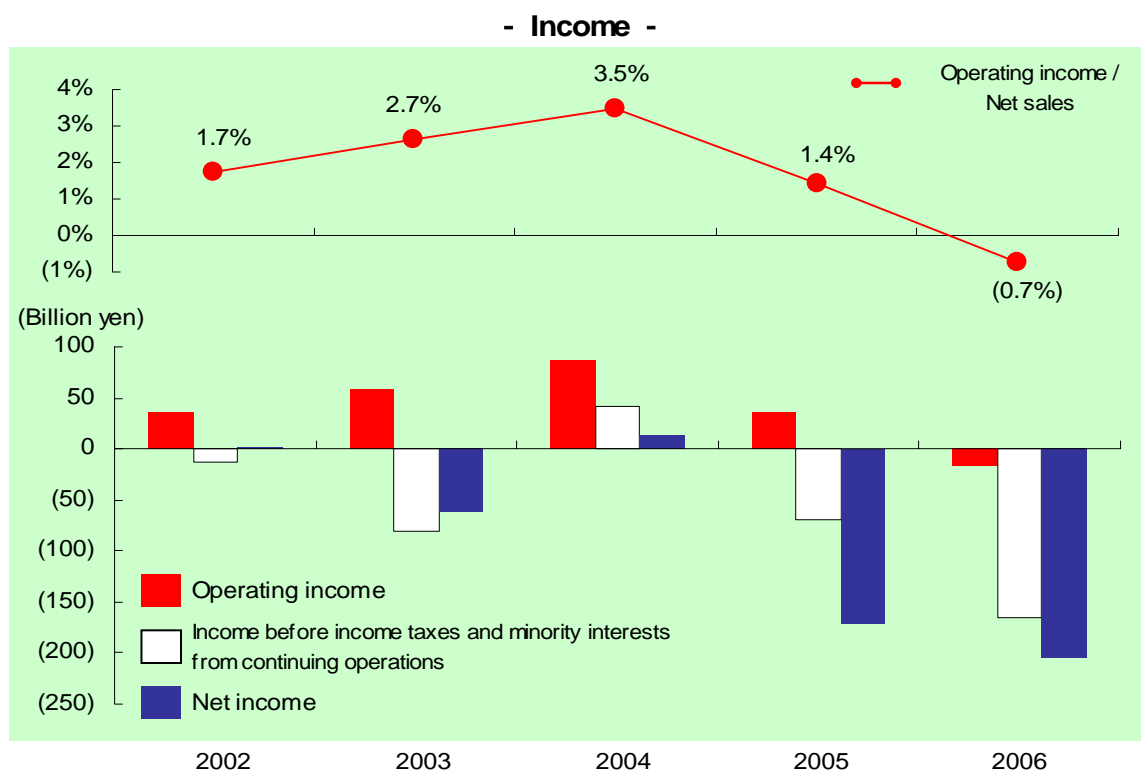
- (notes) 1. Financial figures in this report have been calculated on a consolidated basis for the years ended March 31.
2. SANYO's consolidated financial statements are prepared based on U.S. accounting standards.
3. Not all figures are audited.

SANYO Electric Co., Ltd.

Financial Highlights (1)

<Business Results>

	years ended March 31					(Millions of yen)
	2002	2003	2004	2005	2006	
Net sales	2,024,719	2,182,553	2,508,018	2,484,639	2,397,026	
Operating income (loss)	35,136	57,963	87,113	35,236	(17,154)	
Ratio to net sales	1.7%	2.7%	3.5%	1.4%	(0.7%)	
Income (Loss) before income taxes and minority interests from continuing operations	(13,390)	(80,072)	41,523	(68,767)	(165,696)	
Ratio to net sales	(0.7%)	(3.7%)	1.7%	(2.8%)	(6.9%)	
Net income (loss) from continuing operations	(2,661)	(63,692)	12,262	(172,906)	(200,330)	
Ratio to net sales	(0.1%)	(2.9%)	0.5%	(7.0%)	(8.4%)	
Net income (loss) from discontinued operations	3,976	2,021	1,138	1,362	(5,331)	
Ratio to net sales	0.2%	0.1%	0.0%	0.1%	(0.2%)	
Net income (loss)	1,315	(61,671)	13,400	(171,544)	(205,661)	
Ratio to net sales	0.1%	(2.8%)	0.5%	(6.9%)	(8.6%)	
Return on equity ratio	0.2%	(12.8%)	2.9%	(43.7%)	(59.5%)	
Return on total assets ratio	0.0%	(2.3%)	0.5%	(6.5%)	(8.6%)	



- (notes) 1. To be consistent with financial reporting principles and practices generally accepted in Japan, operating income is calculated as net sales and operating revenue less cost of sales and selling, general and administrative expenses.
2. Based on U.S. accounting standards, SANYO classified SANYO Electric Credit Co., Ltd as a discontinued operation in the fiscal year ended March, 2006 and have reflected those changes in the consolidated financial statements for the fiscal years ended March, 2005, 2004, 2003 and 2002.



Financial Highlights (2)

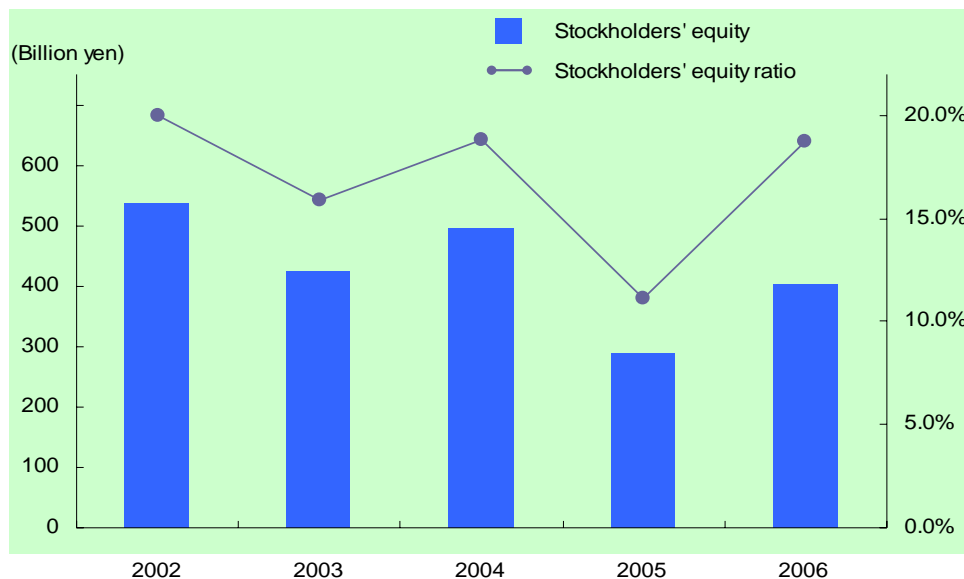
<Consolidated Balance Sheets>

as of March 31

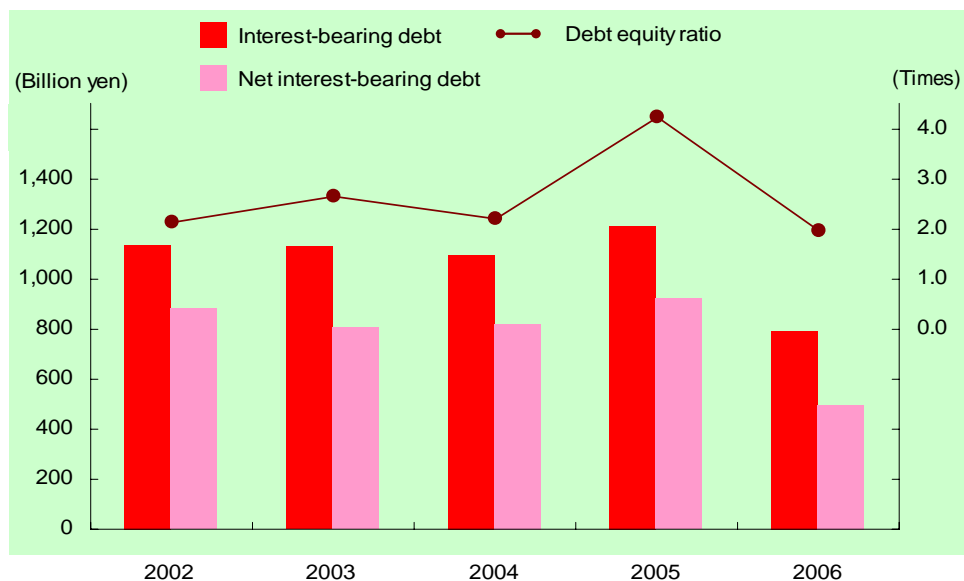
(Millions of yen)

	2002	2003	2004	2005	2006
Total assets	2,683,930	2,686,967	2,643,627	2,600,677	2,154,837
Stockholders' equity	535,705	426,026	497,302	288,268	402,892
Stockholders' equity ratio	20.0%	15.9%	18.8%	11.1%	18.7%
Inventories	404,688	341,226	334,214	383,976	317,894
Inventory turnover period	73days	57days	49days	56days	48days
Interest-bearing debt	1,137,579	1,125,662	1,093,264	1,213,879	792,166
Net interest-bearing debt	877,897	805,909	815,802	918,897	494,666
Debt equity ratio	2.1times	2.6times	2.2times	4.2times	2.0times

- Stockholders' Equity -



- Interest-Bearing Debt -



- (notes) 1. Net interest-bearing debt = Interest-bearing debt - Cash and cash equivalents
 2. Debt equity ratio = Interest-bearing debt / Stockholders' equity

Financial Highlights (3)

<Consolidated Statements of Cash Flows>

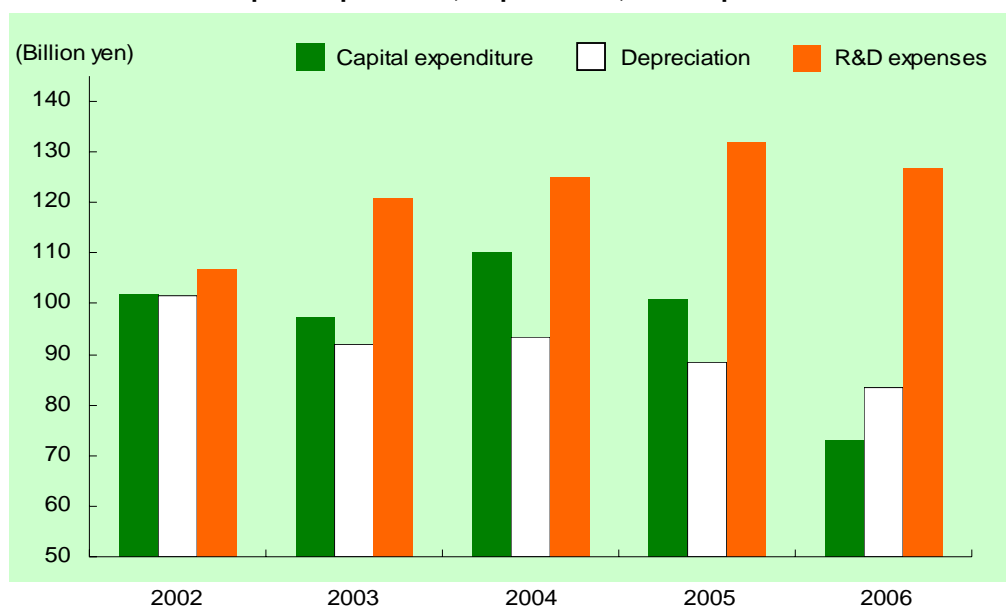
	years ended March 31					(Millions of yen)
	2002	2003	2004	2005	2006	
Net cash provided by (used in) operating activities	130,908	131,756	86,371	3,695	(664)	
Net cash provided by (used in) investing activities	(150,458)	(61,631)	(91,356)	(82,234)	36,001	
Free cash flows	(19,550)	70,125	(4,985)	(78,539)	35,337	
Net cash provided by (used in) financing activities	(54,706)	(7,189)	(33,305)	70,580	(69,980)	
Cash and cash equivalents at end of year	259,682	319,753	277,462	294,982	297,500	

(note) SANYO define free cash flows as the sum of net cash provided by operating activities and net cash provided by investing activities.

<Capital Expenditure, Depreciation, R&D Expenses>

	years ended March 31					(Millions of yen)
	2002	2003	2004	2005	2006	
Capital expenditure	101,962	97,289	110,172	100,740	73,104	
Depreciation	101,545	91,885	93,443	88,513	83,312	
R&D expenses	107,044	120,833	125,206	131,828	126,767	

- Capital Expenditure, Depreciation, R&D Expenses -



(note) Based on U.S. accounting standards, SANYO classified SANYO Electric Credit Co., Ltd as a discontinued operation in the fiscal year ended March, 2006 and have reflected those changes in the consolidated financial statements for the fiscal years ended March, 2005, 2004, 2003 and 2002.

<The Numbers of Employees and Consolidated Subsidiaries>

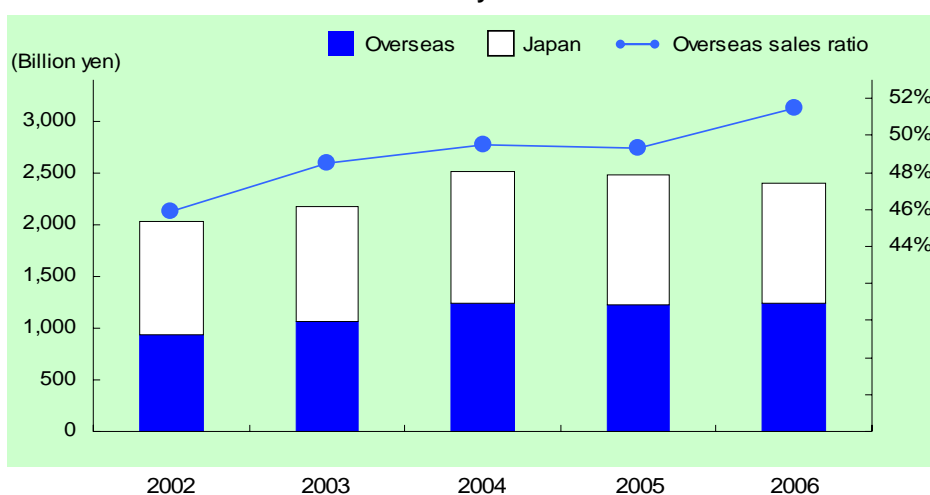
	as of March 31				
	2002	2003	2004	2005	2006
Number of employees	80,500	79,025	82,337	96,023	106,389
Consolidated subsidiaries	123	117	109	142	236
Affiliates accounted for by equity method	52	51	87	55	73

(note) Consolidated subsidiaries as of March 31, 2006 includes variable interest entities.

<Sales by Area>

	years ended March 31					(Millions of yen)
	2002	2003	2004	2005	2006	
Japan	1,095,611	1,123,543	1,266,876	1,259,494	1,162,390	
Share of net sales	54.1%	51.5%	50.5%	50.7%	48.5%	
Overseas	929,108	1,059,010	1,241,142	1,225,145	1,234,636	
Share of net sales	45.9%	48.5%	49.5%	49.3%	51.5%	
North America	302,884	294,206	335,139	333,275	360,928	
Europe	156,075	167,783	186,469	181,612	185,062	
Asia	430,243	549,785	668,610	634,778	620,219	
Others	39,906	47,236	50,924	75,480	68,427	
Net sales	2,024,719	2,182,553	2,508,018	2,484,639	2,397,026	

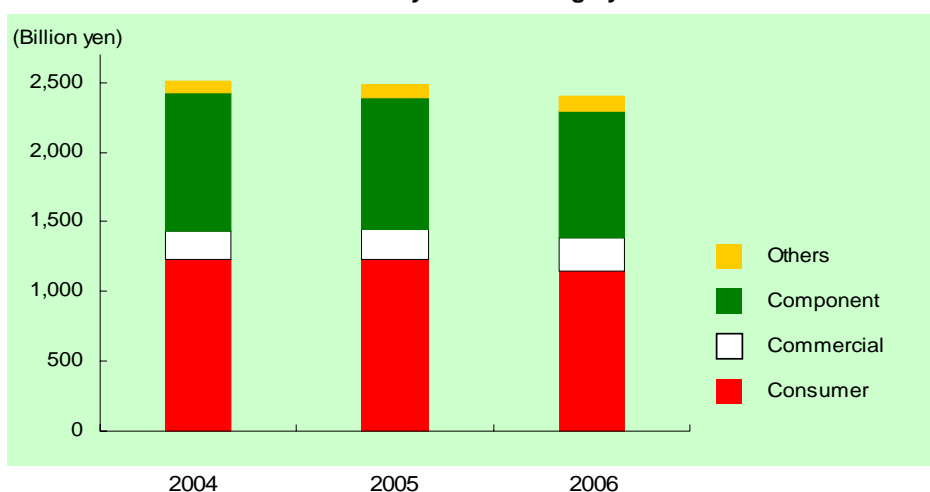
- Sales by Area -



<Sales by Product Category>

	years ended March 31			(Millions of yen)
	2004	2005	2006	
Consumer Group	1,235,965	1,228,169	1,146,765	
Commercial Group	197,978	212,842	234,962	
Component Group	985,324	946,433	911,750	
Others	88,751	97,195	103,549	
Total	2,508,018	2,484,639	2,397,026	

- Sales by Product Category -





Business Segment

<Net Sales and Operating Revenue>

years ended March 31

(Millions of yen)

		2005	2006
Consumer Group	AV/Information and Communication Equipment	987,645	894,510
	Home Appliances	260,667	259,885
	Total	1,248,312	1,154,395
Commercial Group		216,121	236,272
Component Group	Electronic Devices	442,436	378,270
	Batteries	369,050	419,225
	Others	172,901	150,953
	Total	984,387	948,448
Others		183,651	198,937
Corporate and Eliminations		(71,086)	(53,747)
Total		2,561,385	2,484,305

<Operating Income>

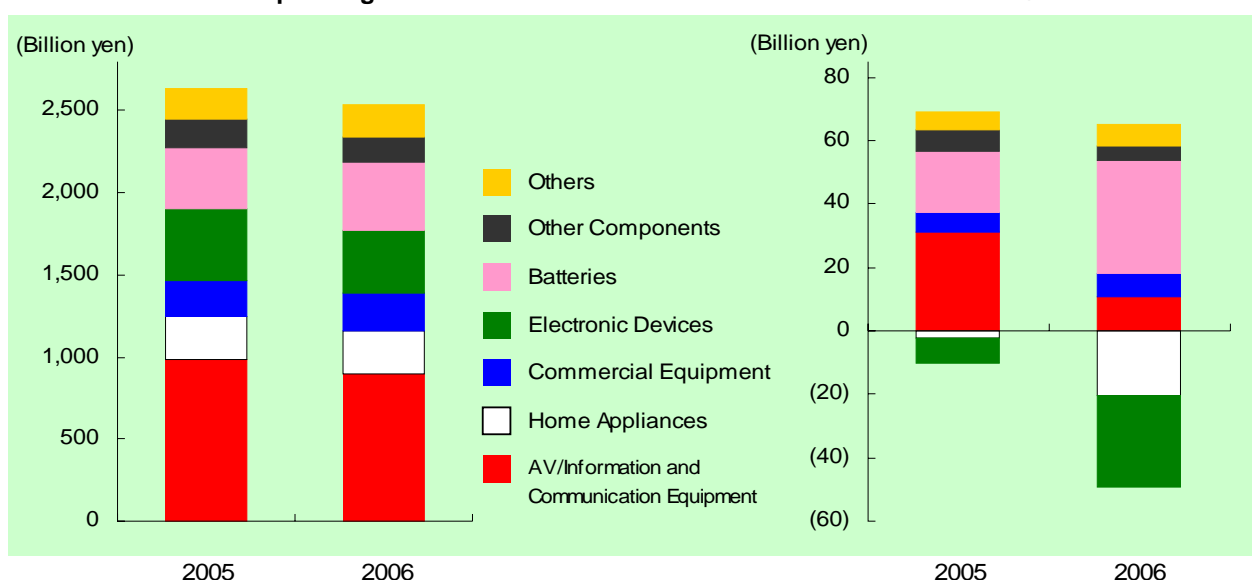
years ended March 31

(Millions of yen)

		2005	2006
Consumer Group	AV/Information and Communication Equipment	31,257	10,594
	Home Appliances	(2,382)	(20,483)
	Total	28,875	(9,889)
Commercial Group		6,176	7,471
Component Group	Electronic Devices	(7,876)	(28,554)
	Batteries	19,026	35,759
	Others	7,046	4,427
	Total	18,196	11,632
Others		5,442	6,655
Corporate and Eliminations		(23,453)	(33,023)
Total		35,236	(17,154)

- Net Sales and Operating Revenue -

- Operating Income -



(notes) 1. To be consistent with financial reporting principles and practices generally accepted in Japan, operating income is calculated as net sales and operating revenue less cost of sales and selling, general and administrative expenses.

2. Based on U.S. accounting standards, SANYO classified SANYO Electric Credit Co., Ltd as a discontinued operation in the fiscal year ended March, 2006 and have reflected those changes in the consolidated financial statements for the fiscal year ended March, 2005.

3. Charts are prepared excluding adjustments for eliminations.



Consolidated Statements of Income

	years ended March 31					(Millions of yen)
	2002	2003	2004	2005	2006	
Net sales	2,024,719	2,182,553	2,508,018	2,484,639	2,397,026	
Operating revenue	87,408	91,322	77,210	76,746	87,279	
Sales and operating revenue	2,112,127	2,273,875	2,585,228	2,561,385	2,484,305	
Cost of sales	1,704,797	1,817,125	2,115,262	2,125,637	2,102,734	
Selling, general and administrative expenses	354,256	378,451	382,853	400,512	398,725	
Operating income (loss)	53,074	78,299	87,113	35,236	(17,154)	
Other income	35,309	36,692	32,859	31,119	66,840	
Interest and dividends	8,732	6,954	6,065	5,066	7,170	
Other	26,577	29,738	26,794	26,053	59,670	
Other expenses	88,220	189,148	78,449	135,122	215,382	
Interest	23,196	18,463	10,821	13,127	18,412	
Other	65,024	170,685	67,628	121,995	196,970	
Income (Loss) before income taxes and minority interests from continuing operations	-	-	41,523	(68,767)	(165,696)	
Income (Loss) before income taxes	163	(74,157)	-	-	-	
Income taxes	(472)	(14,168)	26,357	104,695	38,309	
Income (Loss) before minority interests from continuing operations	-	-	15,166	(173,462)	(204,005)	
Income (Loss) before minority interests	635	(59,989)	-	-	-	
Minority interests	(1,857)	1,682	2,904	(556)	(3,675)	
Cumulative effect of accounting change	1,177	-	-	-	-	
Net income (loss) from continuing operations	-	-	12,262	(172,906)	(200,330)	
Discontinued operations						
Income (Loss) from discontinued operations	-	-	3,315	3,372	(1,882)	
Income taxes	-	-	2,177	2,010	3,449	
Net income (loss) from discontinued operations	-	-	1,138	1,362	(5,331)	
Net income (loss)	1,315	(61,671)	13,400	(171,544)	(205,661)	

(notes) 1. To be consistent with financial reporting principles and practices generally accepted in Japan, operating income is calculated as net sales and operating revenue less cost of sales and selling, general and administrative expenses.

2. Based on U.S. accounting standards, SANYO classified SANYO Electric Credit Co., Ltd as a discontinued operation in the fiscal year ended March, 2006 and have reflected those changes in the consolidated financial statements for the fiscal years ended March, 2005 and 2004.



Consolidated Balance Sheets (1)

	years ended March 31				
	2002	2003	2004	2005	2006
	(Millions of yen)				
(Assets)					
Current assets					
Cash	78,725	145,916	101,861	124,053	196,784
Time deposits	180,957	173,837	175,601	170,929	100,716
Restricted cash	-	-	-	-	264,800
Securities	66,806	29,328	16,180	9,542	1,109
Receivables:					
Notes and accounts	395,492	416,580	436,105	448,281	461,613
Finance receivables	223,487	235,247	257,286	261,639	-
Affiliates and unconsolidated subsidiaries	45,258	57,094	66,566	29,406	19,182
Allowance for doubtful accounts	(20,720)	(28,506)	(23,734)	(30,046)	(10,509)
Inventories	404,688	341,226	334,214	383,976	317,894
Deferred income taxes	23,873	32,727	49,329	17,911	8,287
Other	58,726	66,751	61,331	77,675	60,441
Total current assets	1,457,292	1,470,200	1,474,739	1,493,366	1,420,317
Investments and advances					
Affiliates and unconsolidated subsidiaries	26,972	27,093	40,258	56,066	48,000
Other	223,260	188,383	200,976	194,925	112,988
Total investments and advances	250,232	215,476	241,234	250,991	160,988
Property, plant, and equipment					
Buildings	483,691	477,324	464,175	457,225	409,581
Machinery and equipment	1,013,659	987,442	1,006,905	944,543	919,154
Accumulated depreciation	(999,976)	(998,521)	(1,003,934)	(941,762)	(941,303)
Land	146,220	144,450	145,386	130,906	101,664
Construction in progress	18,526	16,300	11,359	20,319	11,590
Total property, plant, and equipment	662,120	626,995	623,891	611,231	500,686
Deferred income taxes	142,854	187,205	101,882	32,512	10,935
Other assets	171,432	187,091	201,881	212,577	61,911
Total assets	2,683,930	2,686,967	2,643,627	2,600,677	2,154,837



Consolidated Balance Sheets (2)

	years ended March 31			(Millions of yen)	
	2002	2003	2004	2005	2006
(Liabilities)					
Current liabilities					
Short-term borrowings	464,475	407,298	386,570	408,531	264,441
Current portion of long-term debt	154,963	153,095	160,884	139,101	74,297
Notes and accounts payable:					
Trade	391,337	456,781	462,803	453,554	402,638
Affiliates and unconsolidated subsidiaries	9,405	9,836	14,461	50,235	20,392
Construction	30,086	31,598	26,992	33,108	13,334
Accrued income taxes	16,777	15,372	11,305	11,301	11,638
Employees' saving deposits	26,697	24,180	23,088	21,888	13,647
Other liabilities	221,077	223,562	237,286	248,810	245,856
Total current liabilities	1,314,817	1,321,722	1,323,389	1,366,528	1,046,243
Long-term debt	547,620	583,556	562,057	679,728	500,434
Accrued pension and severance costs	239,301	308,751	213,044	216,190	186,969
Total liabilities	2,101,738	2,214,029	2,098,490	2,262,446	1,733,646
Minority interests in consolidated subsidiaries	46,487	46,912	47,835	49,963	18,299
(Stockholders' Equity)					
Common stock	172,241	172,242	172,242	172,242	261,328
Additional paid-in capital	336,028	336,029	336,036	336,035	721,828
Retained earnings	163,340	90,498	92,766	(84,342)	(466,951)
Accumulated other comprehensive loss	(133,623)	(165,626)	(96,527)	(128,310)	(105,885)
Sub total	537,986	433,143	504,517	295,625	410,320
Less, treasury stock at cost	(2,281)	(7,117)	(7,215)	(7,357)	(7,428)
Total stockholders' equity	535,705	426,026	497,302	288,268	402,892
Total liabilities and stockholders' equity	2,683,930	2,686,967	2,643,627	2,600,677	2,154,837
<Supplemental information>					
Stockholders' equity ratio	20.0%	15.9%	18.8%	11.1%	18.7%
Interest-bearing debt	1,137,579	1,125,662	1,093,264	1,213,879	792,166
Net interest-bearing debt	877,897	805,909	815,802	918,897	494,666
Debt equity ratio	2.1times	2.6times	2.2times	4.2times	2.0times



Consolidated Statements of Cash Flows

	years ended March 31			(Millions of yen)	
	2002	2003	2004	2005	2006
1. Cash flows from operating activities					
Net income (loss)	1,315	(61,671)	13,400	(171,544)	(205,661)
Adjustments to reconcile net income (loss) to net cash provided by operating activities					
Depreciation and amortization	125,443	124,762	113,785	123,540	129,712
Impairment loss on fixed assets	-	-	-	-	107,702
Decrease (increase) in receivables	53,179	(60,493)	(56,613)	100,359	21,281
Decrease (increase) in inventories	34,666	54,642	(1,987)	(24,872)	78,552
Increase (Decrease) in notes and accounts payable	(70,788)	61,724	15,062	(67,385)	(105,520)
Other, net	(12,907)	12,792	2,724	43,597	(26,730)
Net cash provided by (used in) operating activities	130,908	131,756	86,371	3,695	(664)
2. Cash flows from investing activities					
Decrease (increase) in short-term and long-term investments	(23,323)	19,981	23,135	(13,210)	96,924
Payments for purchase of property, plant and equipment	(146,891)	(90,783)	(110,329)	(96,633)	(84,564)
Proceeds from sale of property, plant and equipment	24,978	28,012	15,754	39,711	46,760
Proceeds on business transfer	-	-	-	19,153	-
Other, net	(5,222)	(18,841)	(19,916)	(31,255)	(23,119)
Net cash provided by (used in) investing activities	(150,458)	(61,631)	(91,356)	(82,234)	36,001
3. Cash flows from financing activities					
Increase (Decrease) in short-term borrowings	19,652	(33,638)	(20,998)	(20,737)	(20,432)
Increase (Decrease) in long-term debt	(61,267)	43,427	(462)	104,096	(84,115)
Proceeds from issuance of new shares	-	-	-	-	299,238
Deposit in restricted cash	-	-	-	-	(300,000)
Withdrawal from restricted cash	-	-	-	-	35,200
Dividends paid	(11,794)	(11,733)	(11,650)	(12,632)	(1,606)
Other, net	(1,297)	(5,245)	(195)	(147)	1,735
Net cash provided by (used in) financing activities	(54,706)	(7,189)	(33,305)	70,580	(69,980)
4. Effect of exchange rate changes on cash and cash equivalents	4,358	(5,221)	(7,185)	1,145	8,182
5. Net increase (decrease) in cash and cash equivalents	(69,898)	57,715	(45,475)	(6,814)	(26,461)
6. Cash and cash equivalents of newly consolidated subsidiaries	-	2,356	3,184	24,334	28,979
7. Cash and cash equivalents at beginning of year	329,580	259,682	319,753	277,462	294,982
8. Cash and cash equivalents at end of year	259,682	319,753	277,462	294,982	297,500
<Supplemental information>					
Free cash flows	(19,550)	70,125	(4,985)	(78,539)	35,337

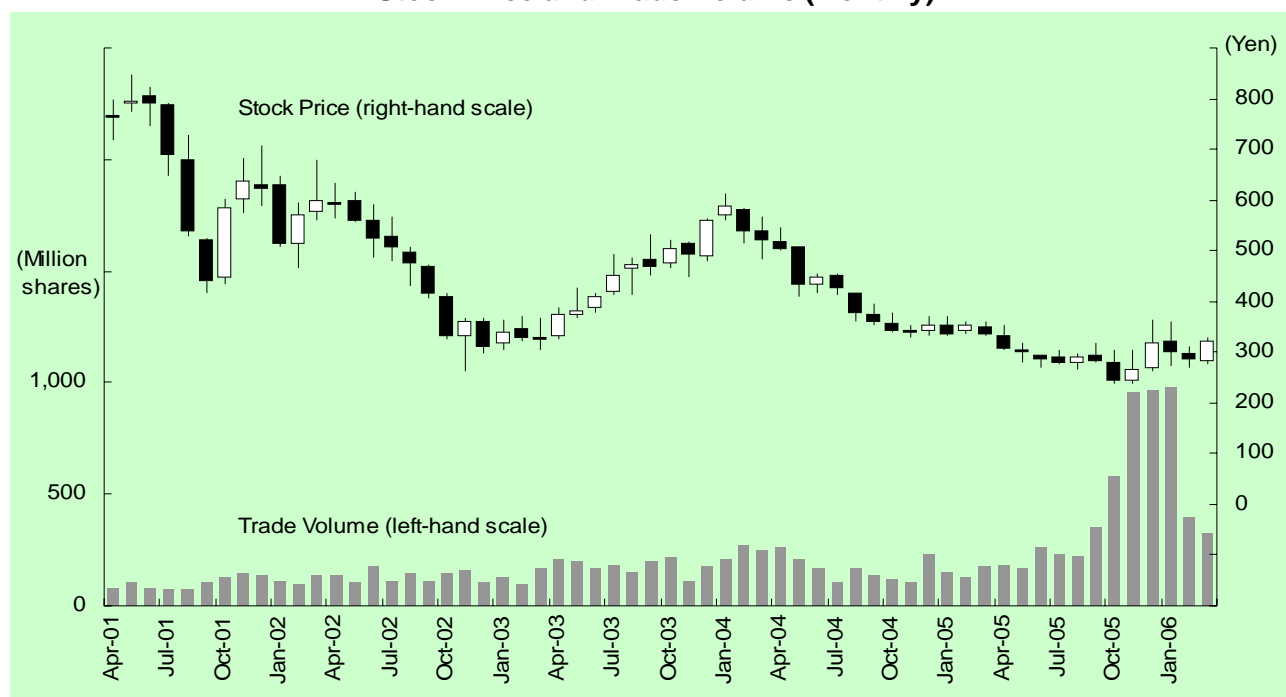
(note) SANYO define free cash flows as the sum of net cash provided by operating activities and net cash provided by investing activities.



Stock Information

		years ended March 31				
		2002	2003	2004	2005	2006
Price range of common share						
High	(Yen)	847	633	614	545	363
Low	(Yen)	418	264	326	330	237
Close	(Yen)	597	324	518	334	323
Number of common shares outstanding (at the year-end)	(Thousand shares)	1,870,174	1,855,248	1,855,115	1,854,730	1,854,464
Weighted average number of common shares	(Thousand shares)	1,870,510	1,863,198	1,855,193	1,854,947	1,854,591
Net Earnings per Share	(Yen)	0.70	(33.10)	7.22	(92.48)	(194.96)
Book value per Share	(Yen)	286.45	229.63	268.07	155.42	16.76
Cash Flows per Share	(Yen)	54.99	16.22	57.59	(44.76)	(65.97)
Price to Earnings Ratio	(Times)	852.86	-	71.75	-	-
Price to Book value Ratio	(Times)	2.08	1.41	1.93	2.15	19.27
Price to Cash Flows Ratio	(Times)	10.86	19.98	8.99	-	-

- Stock Price and Trade Volume (Monthly) -



- (notes)
1. Treasury stock is not included in the number of common shares outstanding at the year-end.
 2. Cash flows per share = (Net income + Depreciation) / Weighted average number of common shares
 3. Based on U.S. accounting standards, SANYO classified SANYO Electric Credit Co., Ltd as a discontinued operation in the fiscal year ended March, 2006 and have reflected those changes in the consolidated financial statements for the fiscal years ended March, 2005, 2004, 2003 and 2002.
 4. Net earnings per share and Book value per share are calculated in consideration of preferred shares.