

Stock Information (as of March 31, 2009)

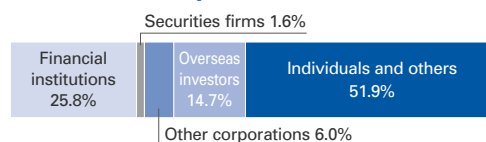
Common Stock Data

Stock Listings : Tokyo, Osaka
 Securities Code : 6764
 Number of Unit Stocks : 1,000 stocks
 Stock Transfer Agent : The Sumitomo Trust & Banking Co., Ltd.
 5-33, Kitahama 4-chome, Chuo-ku, Osaka
 540-8639, Japan

Stock Data

Class	Total number of stocks issuable	Total capital stocks issued	Number of stockholders
Common stock	7,060,300,000	1,872,338,099	263,615
Class A preferred stock	182,600,000	182,542,200	3
Class B preferred stock	246,100,000	246,029,300	3

Stock Ownership (Common stock)



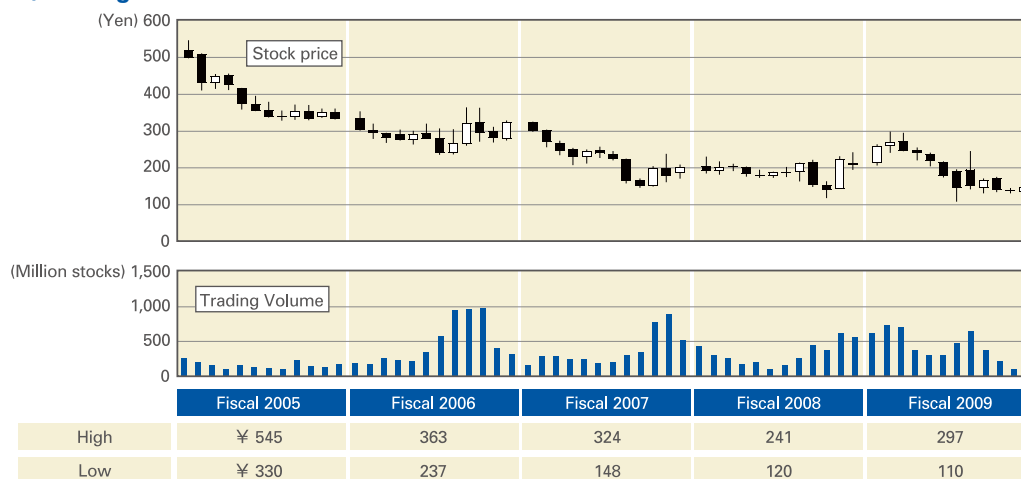
Major Stockholders

	Number of stocks	Stockholding ratio
(1) Common stockholders		
Japan Trustee Services Bank, Ltd. (trust account 4G)	85,709,000	4.6%
SANYO Electric Employees Stockholders' Association	50,681,588	2.7%
Japan Trustee Services Bank, Ltd. (trust account)	49,180,000	2.6%
Sumitomo Mitsui Banking Corporation	43,278,781	2.3%
Nippon Life Insurance Company	39,441,145	2.1%
The Master Trust Bank of Japan, Ltd. (trust account)	30,185,000	1.6%
Sumitomo Life Insurance Company	30,000,000	1.6%
Resona Bank, Ltd.	26,148,402	1.4%
Mitsui Sumitomo Insurance Co., Ltd.	23,435,000	1.3%
Shioya Tochi Co., Ltd.	22,467,977	1.2%

	Number of stocks	Stockholding ratio
(2) Class A preferred stockholders		
Evolution Investments Co., Ltd.	89,804,900	49.2%
Oceans Holdings Co., Ltd.	89,804,900	49.2%
Sumitomo Mitsui Banking Corporation	2,932,400	1.6%
(3) Class B preferred stockholders		
Evolution Investments Co., Ltd.	88,766,600	36.1%
Oceans Holdings Co., Ltd.	88,766,600	36.1%
Sumitomo Mitsui Banking Corporation	68,496,100	27.8%

Note: Evolution Investments Co., Ltd. is a wholly-owned subsidiary of Daiwa Securities SMBC Principal Investments Co., Ltd. and Oceans Holdings Co., Ltd. is an affiliate company of The Goldman Sachs Group Inc.

Stock price/Trading Volume



*Stock prices and trading volumes are quoted from Tokyo Stock Exchange.